

# Animal Cell Biology

Scientific Concept: Biology

Recommended Ages: 8 to 12

Scientific Practice: Observation, Analysis

## What to Know About This Kit

Use this 4-D model to learn about the parts of an animal cell. Included is an assembly guide to help you build the model, as well as information and questions to help you build your knowledge.

As you assemble the model, think about how each part helps the cell. Why is each part important?

Did you enjoy this kit? We'd love to see how you used it! Tag us on social media and let us know! #APLstem

Twitter: @anchlibrary

Facebook & Instagram: @anchoragelibrary



## Scientific Method

**Ask questions, test the answers, do it again.**

That's the process scientists use when they tackle a problem.

**Observations** lead to a question. Possible answers are called **hypotheses**. You can test these in many ways such as with an experiment, a mathematical analysis, creating a model, and more observation.

Next the scientists **analyze** their results to come to a **conclusion** that supports or rejects their hypothesis.

Sometimes this process leads to new observations which lead to new questions.

Experiments need to be repeatable by other teams to see if they get the same results. A hypothesis that repeatedly is validated (found to be true in testing) can become a scientific theory.

**Scientists are always observing, questioning, and repeating experiments to keep learning!**



This kit generously sponsored by:

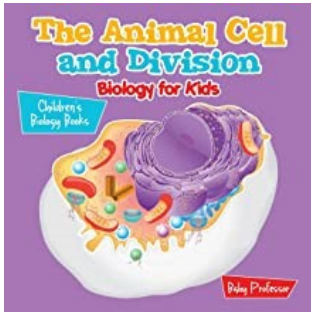
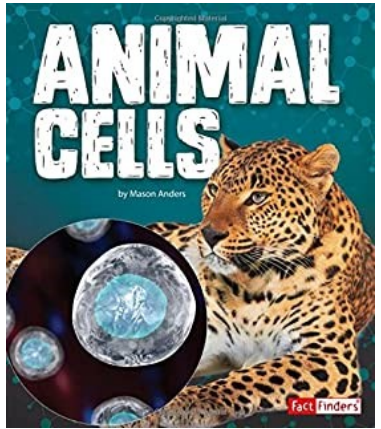
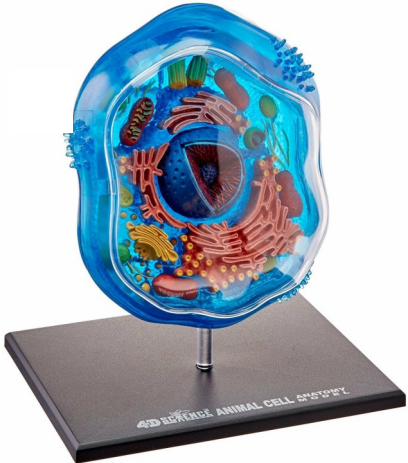


This material is based upon work supported by the National Science Foundation under Grant Number DRL-1657593. Any opinions, findings, and conclusions or recommendations expressed in this material are those of the authors and do not necessarily reflect the views of the National Science Foundation.

*Please note: This kit must be returned to a staff member at an Anchorage Public Library location.*



Kit Contents & Replacement Costs		
Item Type	Description	Cost
Object	Animal cell model	\$33
Guide	Kit guide	\$2
Book	<i>Animal Cells</i>	\$8
Book	<i>The Animal Cell and Division</i> by Baby Professor	\$13
Packaging & Processing Fee:		\$25
<b>Total Kit Replacement Cost:</b>		<b>\$81</b>



Please verify all parts are present before returning.